



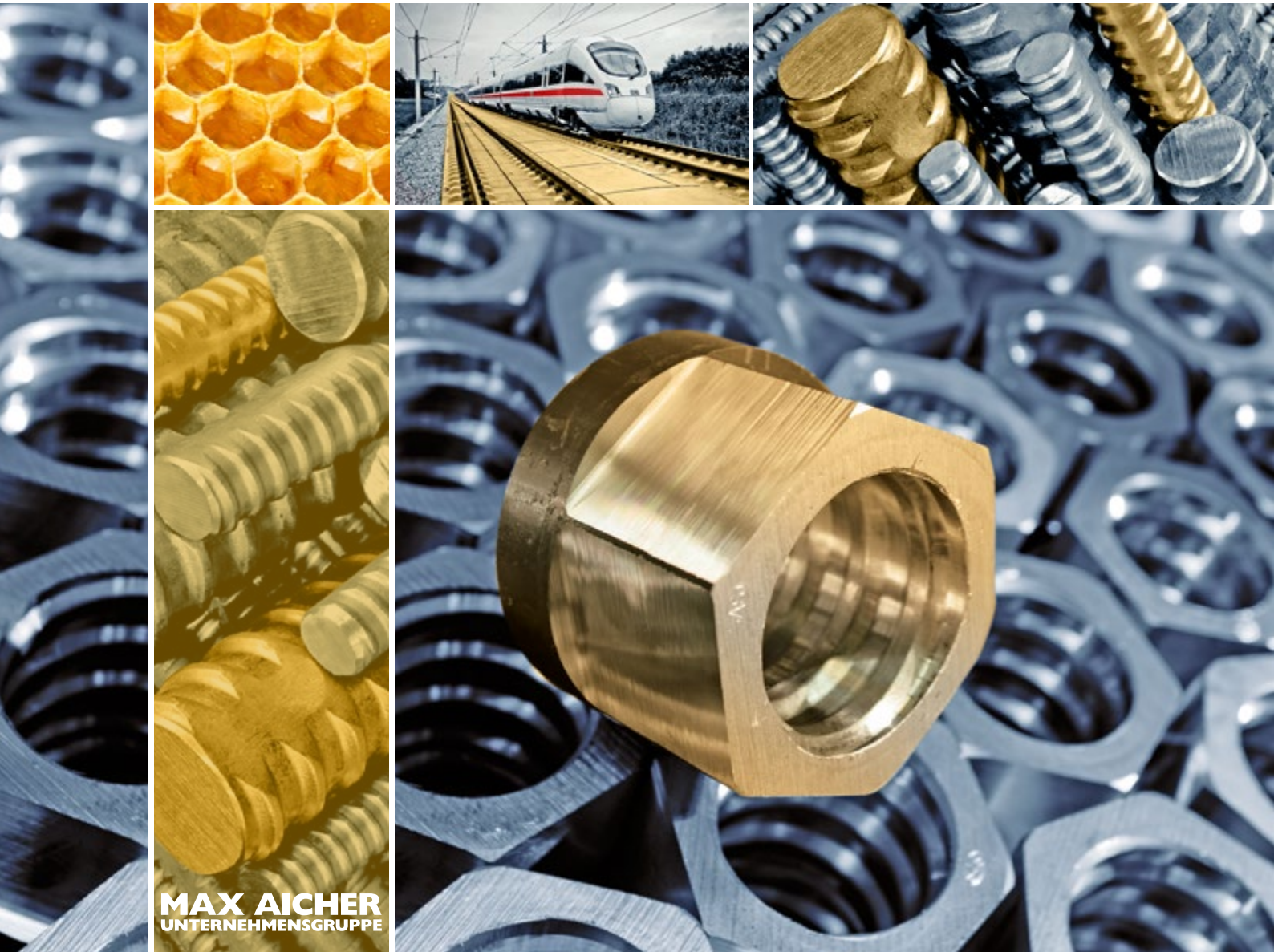
## Katalog | catalogue

SAS 500 / 550 Ø 12 - 50 mm + 75 mm

SAS 555 / 700 Ø 57,5 mm + 63,5 mm

SAS 550 Ø 12 - 50 mm

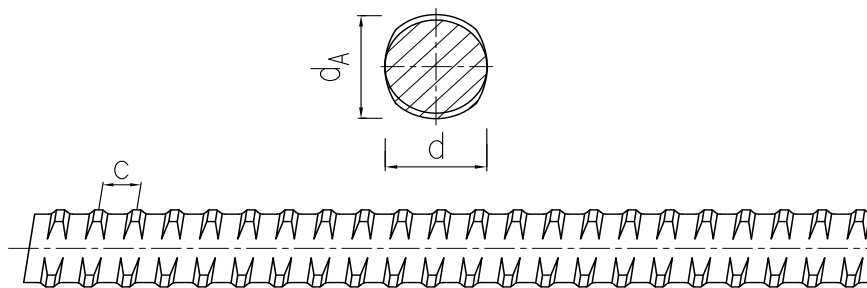
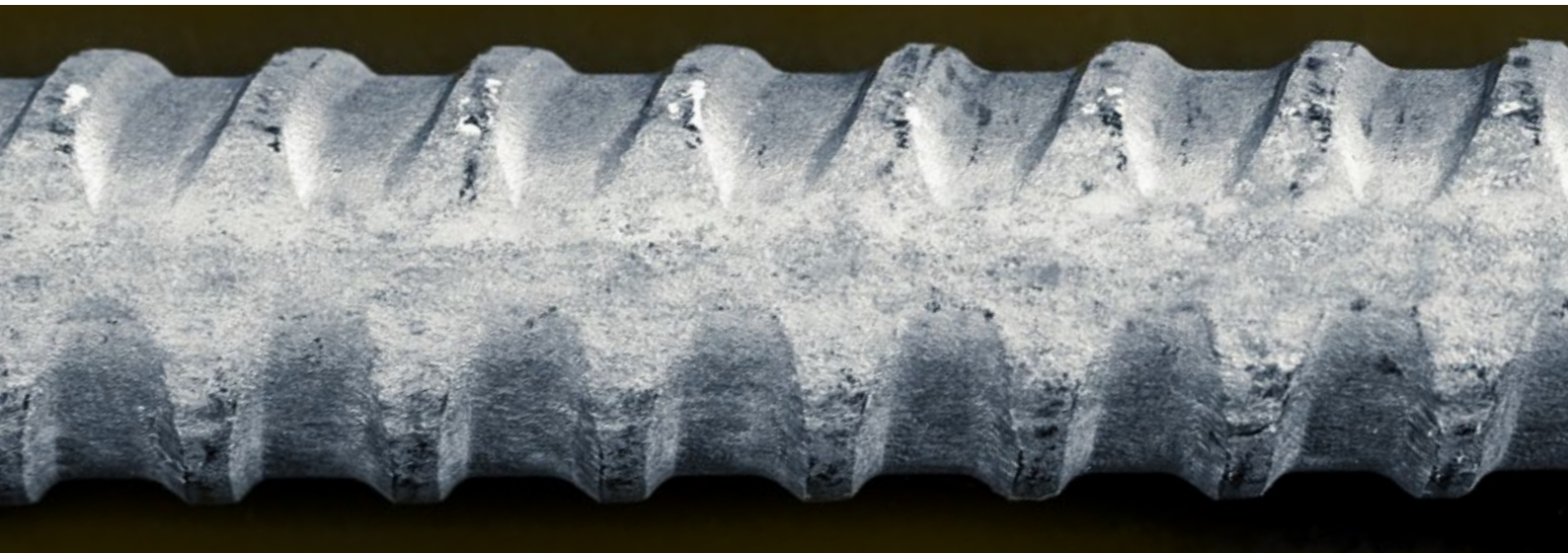
### SAS SYSTEMS



# SAS Gewindestäbe | SAS thread bars

SAS 500 / 550 Ø 15 - 50 mm + 75 mm

SAS 555 / 700 Ø 57,5 mm + 63,5 mm



**SAS Gewindestab**  
warmgewalzt, Rippenstahl - linksgängig

**SAS thread bar**  
hot rolled, ribbed - left hand thread

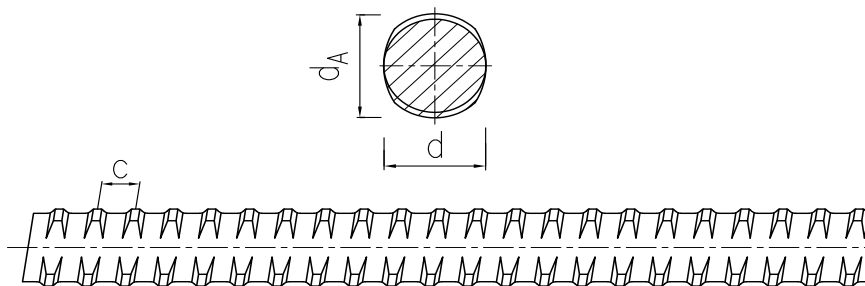
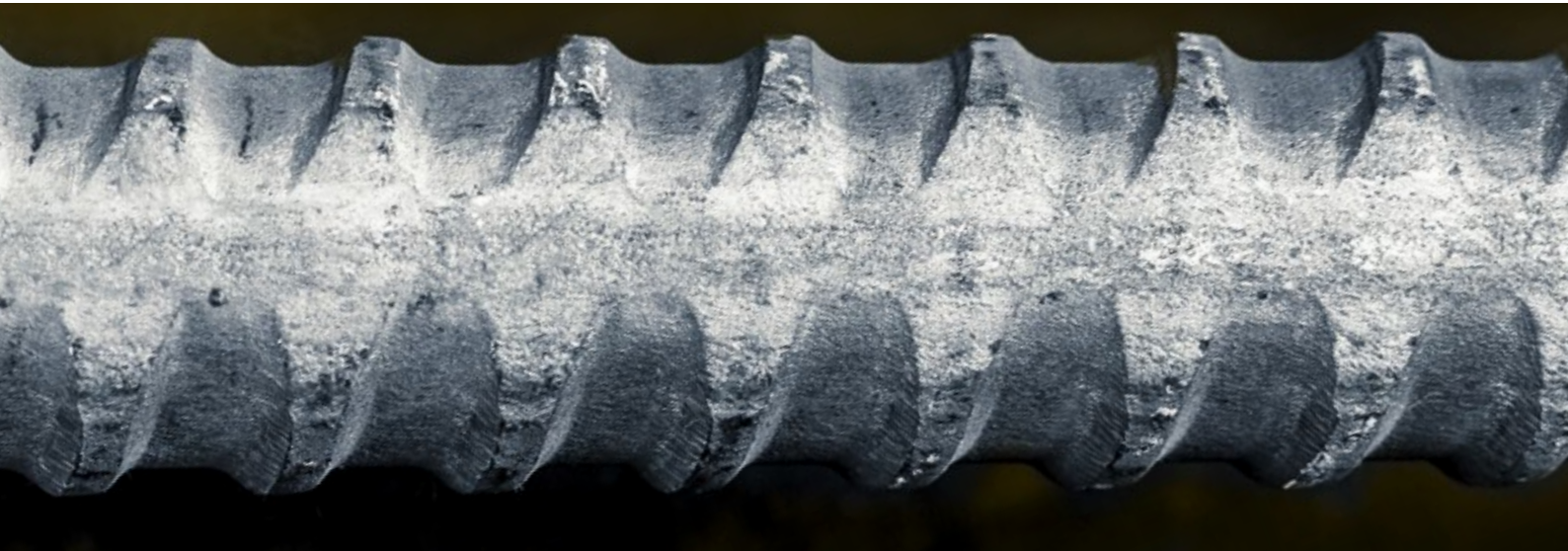
d	[mm]	12	14	16	20	25	28	32	36	40	43	50	57,5	63,5	75
max d <sub>A</sub>	[mm]	14	16	19	23	29	32	36	41	45	48	56	63	70	82
c	[mm]	7	7,5	8	10	12,5	14	16	18	20	21	26	20	21	24
f <sub>yk</sub> (f <sub>0,2k</sub> ) / f <sub>tk</sub> / A <sub>gt</sub> <sup>1)</sup>		500 N/mm <sup>2</sup> / 550 N/mm <sup>2</sup> / ≥ 6 %											555 N/mm <sup>2</sup> 700 N/mm <sup>2</sup> ≥ 5 %	500 N/mm <sup>2</sup> 550 N/mm <sup>2</sup> ≥ 5 %	
F <sub>yk</sub> (F <sub>0,2k</sub> )	[kN]	57	77	100	160	245	310	405	510	630	726	980	1441	1760	2209
F <sub>tk</sub>	[kN]	62	85	110	175	270	340	440	560	690	799	1080	1818	2215	2430
A	[mm <sup>2</sup> ]	113	154	201	314	491	616	804	1020	1260	1452	1960	2597	3167	4418
G	[kg/m]	0,89	1,21	1,58	2,47	3,85	4,83	6,31	7,99	9,87	11,40	15,40	20,38	24,86	34,68

<sup>1)</sup> Prozentuale Gesamtdehnung bei Höchstlast / percentage total elongation at maximum force

Die Gewichtsangaben von Stab und Zubehör sind Mittelwerte. Die tatsächlichen Gewichte können auf Grund von Fertigungstoleranzen abweichen. / Weight specifications of bar and accessories are average values. The actual values may deviate due to fabrication tolerances.



## SAS 550 Ø 12 - 50 mm



**SAS Gewindestab**  
warmgewalzt, Rippenstahl - linksgängig

**SAS thread bar**  
hot rolled, ribbed - left hand thread

d	[mm]	12	14	16	20	25	26	28	30	32	36	40	43	50
max d <sub>A</sub>	[mm]	14	16	19	23	29	30	32	34	36	41	45	48	56
c	[mm]	7	7,5	8	10	12,5	13	14	15	16	18	20	21	26
f <sub>yk</sub> (f <sub>0,2k</sub> ) / A <sub>gt</sub> <sup>1)</sup>		550 N/mm <sup>2</sup> ≥ 6 %												
F <sub>yk</sub> (F <sub>0,2k</sub> )	[kN]	62	85	110	175	270	290	340	390	440	560	690	799	1080
F <sub>tk</sub> = 1,08 x F <sub>yk</sub>	[kN]	67	92	119	189	292	313	367	421	475	605	745	862	1166
A	[mm <sup>2</sup> ]	113	154	201	314	491	531	616	707	804	1020	1260	1452	1960
G	[kg/m]	0,89	1,21	1,58	2,47	3,85	4,17	4,83	5,55	6,31	7,99	9,87	11,40	15,40

<sup>1)</sup> Prozentuale Gesamtdehnung bei Höchstlast / percentage total elongation at maximum force





**SAS Projekt: Ten Park Museum, Miami, USA**  
*SAS project: Ten Park Museum, Miami, USA*



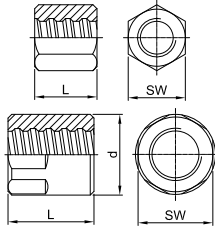


305 530 0200 9008iscaynebay.com

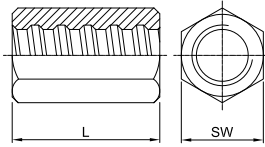


**SASSYSTEMS**

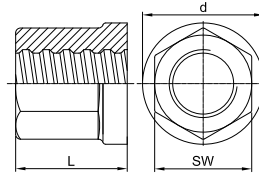
**Ankermutter**  
*anchor nut*



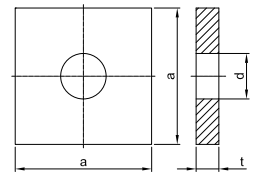
**Ankermutter lang**  
*anchor nut long*



**Ankermutter mit Bund**  
*anchor nut with flange*



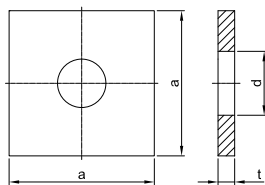
**Ankerplatte gerade**  
*anchor plate flat*



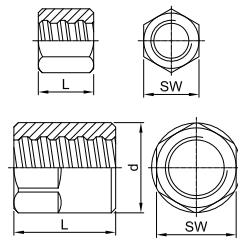
Ø [mm]	SW x L x d [mm]	[kg]	SW x L [mm]	[kg]	SW x L x d [mm]	[kg]	a x t x d [mm]	[kg]
	T 2002		T 2024		T 2163		T 2139	
12	22 x 25	0,05	22 x 35	0,08	-	-	50 x 8 x 16	0,14
14	27 x 35	0,15	27 x 45	0,17	-	-	50 x 8 x 18	0,14
16	32 x 40	0,20	32 x 50	0,25	-	-	60 x 8 x 20	0,21
20	36 x 45	0,26	32 x 65	0,26	-	-	70 x 12 x 25	0,42
25	41 x 50	0,34	41 x 75	0,51	-	-	90 x 15 x 30	0,87
26	46 x 50	0,45	41 x 80	0,48	-	-	100 x 15 x 33	1,08
28	46 x 55	0,48	41 x 85	0,44	-	-	100 x 15 x 33	1,08
30	50 x 60	0,65	46 x 90	0,77	-	-	120 x 20 x 36	2,10
32	55 x 60	0,78	50 x 90	0,86	-	-	120 x 20 x 40	2,06
36	60 x 65	1,00	55 x 95	1,17	-	-	150 x 30 x 44	4,94
40	65 x 70	1,19	60 x 100	1,27	65 x 70 x 85	1,42	150 x 30 x 47	4,89
43	70 x 75	1,51	-	-	70 x 80 x 90	1,81	160 x 40 x 50	7,42
50	80 x 90	2,17	80 x 120	3,00	80 x 85 x 100	2,48	190 x 45 x 58	11,82
57,5	90 x 100 x 102	3,69	-	-	90 x 100 x 110	3,50	220 x 50 x 67	17,61
63,5	100 x 115 x 108	4,72	-	-	100 x 115 x 125	5,05	245 x 50 x 70	22,05
75	100 x 100 x 108	2,99	-	-	100 x 120 x 115	4,15	275 x 65 x 88	35,48

**SASSYSTEMS**

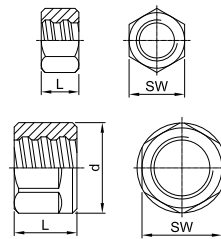
**Ankerplatte gerade klein**  
*anchor plate flat small*



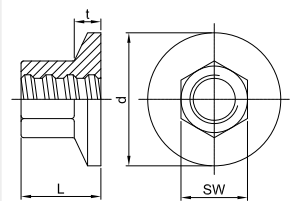
**Kontermutter lang**  
*lock nut long*



**Kontermutter kurz**  
*lock nut short*



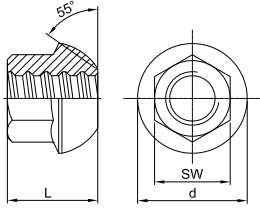
**Ankerstück**  
*anchor piece*



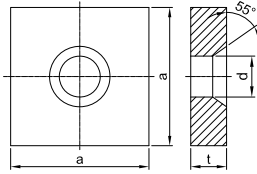
Ø [mm]	a x t x d [mm]	[kg]	SW x L x d [mm]	[kg]	SW x L x d [mm]	[kg]	SW x L x d [mm]	[kg]
	T 2008		T 2003		T 2040		T 2073	
12	-	-	19 x 20	0,03	19 x 13	0,03	-	-
14	-	-	27 x 25	0,08	27 x 15	0,06	-	-
16	-	-	32 x 30	0,15	32 x 20	0,10	30 x 33 x 50	0,25
20	-	-	32 x 40	0,16	32 x 20	0,08	36 x 40 x 65	0,43
25	-	-	41 x 40	0,25	41 x 20	0,14	41 x 45 x 70	0,50
26	-	-	41 x 45	0,26	41 x 25	0,15	41 x 50 x 90	0,70
28	-	-	41 x 45	0,26	41 x 25	0,15	46 x 50 x 90	0,77
30	-	-	50 x 50	0,52	50 x 30	0,28	50 x 55 x 95	1,00
32	-	-	50 x 50	0,47	50 x 30	0,28	50 x 60 x 100	1,40
36	-	-	55 x 55	0,61	55 x 30	0,37	60 x 65 x 110	1,75
40	120 x 17 x 47	1,69	60 x 65	0,83	60 x 35	0,45	65 x 70 x 120	1,85
43	-	-	70 x 65	1,31	70 x 40	0,80	70 x 80 x 130	2,43
50	150 x 20 x 58	3,12	80 x 80	1,94	80 x 50	1,21	80 x 85 x 150	3,75
57,5	-	-	90 x 80 x 102	2,87	90 x 60 x 102	2,08	90 x 100 x 175	6,09
63,5	-	-	90 x 115 x 102	3,55	90 x 75 x 102	2,18	100 x 115 x 190	7,38
75	-	-	100 x 80 x 108	2,37	100 x 80 x 108	2,12	-	-

SASSYSTEMS

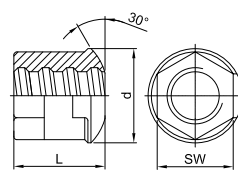
Kugelbundmutter 55°  
domed nut 55°



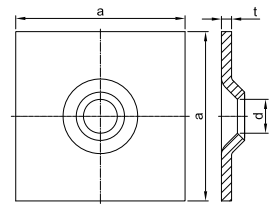
Ankerplatte Konus 55°  
anchor plate cone 55°



Kalottenmutter 30°  
dome nut 30°



Ankerplatte ballig 30°/55°  
domed washer 30°/55°



Ø [mm]

SW x L x d [mm]

[kg]

a x t x d [mm]

[kg]

SW x L x d [mm]

[kg]

a x t x d [mm]

[kg]

T 2044

T 2011

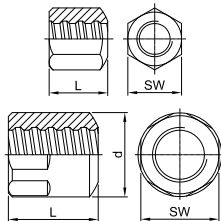
T 2944

T 2132

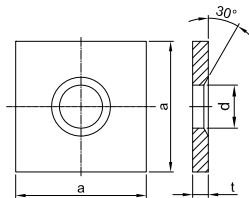
12	-	-	-	-	30 x 33 x 40	0,20	-	-
14	-	-	-	-	30 x 33 x 40	0,20	-	-
16	27 x 33 x 35	0,11	60 x 10 x 25	0,24	30 x 33 x 40	0,20	150 x 10 x 22	1,75
20	36 x 42 x 49	0,30	70 x 12 x 30	0,37	36 x 40 x 51	0,29	150 x 10 x 26	1,65
25	41 x 45 x 55	0,35	90 x 15 x 35	0,81	41 x 45 x 54	0,32	150 x 10 x 34	1,60
26	-	-	-	-	-	-	-	-
28	41 x 54 x 62	0,45	100 x 20 x 40	1,33	41 x 50 x 58	0,38	200 x 10 x 34	3,05
30	-	-	-	-	-	-	-	-
32	46 x 57 x 70	0,60	120 x 20 x 52	1,91	50 x 60 x 62	0,63	200 x 12 x 40	3,65
36	-	-	-	-	-	-	-	-
40	60 x 70 x 88	1,50	150 x 30 x 65	4,48	65 x 70 x 85	1,47	200 x 20 x 53	5,90
43	70 x 80 x 100	1,94	160 x 40 x 75	6,54	-	-	-	-
50	80 x 85 x 107	2,80	190 x 45 x 83	10,78	80 x 85 x 100	2,45	-	-
57,5	90 x 100 x 120	3,79	220 x 50 x 92	16,25	-	-	-	-
63,5	100 x 115 x 144	5,51	245 x 50 x 104	20,09	100 x 115 x 125	4,87	-	-
75	100 x 120 x 160	6,62	275 x 65 x 118	32,60	-	-	-	-

SASSYSTEMS

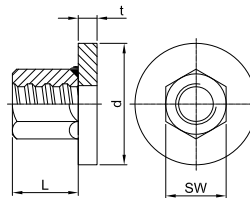
Ankermutter ballig 30°  
bull nose nut 30°



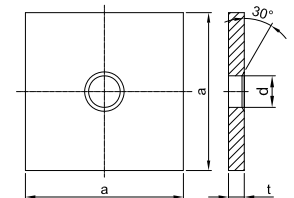
Ankerplatte Konus 30°  
anchor plate cone 30°



Ankerstück geschweißt  
anchor piece welded



Ankerplatte Konus 30° groß  
anchor plate cone 30° big



Ø [mm]

SW x L x d [mm]

[kg]

a x t x d [mm]

[kg]

SW x L x d x t [mm]

[kg]

a x t x d [mm]

[kg]

T 2963

T 1928

T 2973

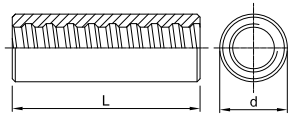
T 2928

12	22 x 25	0,05	50 x 8 x 16	0,14	-	-	-	-
14	27 x 35	0,14	50 x 8 x 18	0,14	-	-	-	-
16	32 x 40	0,18	60 x 8 x 20	0,20	-	-	-	-
20	36 x 45	0,25	70 x 12 x 25	0,41	-	-	-	-
25	41 x 50	0,33	90 x 15 x 30	0,87	-	-	-	-
26	46 x 50	0,42	100 x 15 x 33	1,07	-	-	-	-
28	46 x 55	0,47	100 x 15 x 33	1,07	-	-	200 x 20 x 33	6,15
30	50 x 60	0,61	120 x 20 x 36	2,09	-	-	-	-
32	55 x 60	0,75	120 x 20 x 40	2,06	-	-	200 x 20 x 40	6,10
36	60 x 65	0,94	150 x 30 x 44	4,92	-	-	-	-
40	65 x 70	1,15	150 x 30 x 47	4,88	65 x 70 x 120 x 17	-	-	-
43	70 x 75	1,47	160 x 40 x 58	7,16	-	-	-	-
50	80 x 90	2,10	190 x 45 x 58	11,79	80 x 90 x 150 x 20	-	-	-
57,5	90 x 100 x 102	3,50	220 x 50 x 67	17,56	90 x 100 x 175 x 30	-	-	-
63,5	100 x 115 x 108	4,65	245 x 50 x 70	21,92	100 x 115 x 250 x 30	14,50	-	-
75	100 x 100 x 108	2,90	275 x 65 x 88	35,53	-	-	-	-

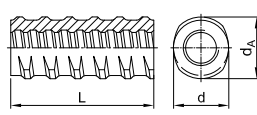
# Zubehör | accessories

## SAS SYSTEMS

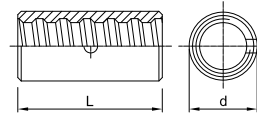
**Muffe standard**  
*coupler standard*



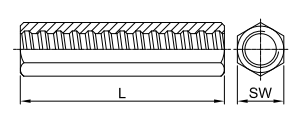
**Gewindemuffe**  
*thread coupler*



**Kontaktmuffe**  
*contact coupler*



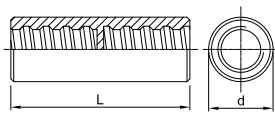
**Sechskantmuffe lang**  
*hexagonal coupler long*



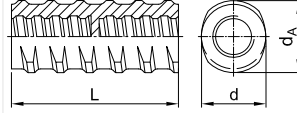
Ø [mm]	d x L [mm]	[kg]	d x d <sub>A</sub> x L [mm]	[kg]	d x L [mm]	[kg]	SW x L [mm]	[kg]
	T 3003		T 3087		T 3006		T 3010	
12	22 x 60	0,11	-	-	-	-	22 x 80	0,17
14	27 x 75	0,22	-	-	-	-	27 x 100	0,34
16	32 x 90	0,37	26,5 x 31 x 90	0,27	-	-	32 x 120	0,59
20	36 x 105	0,52	32 x 37 x 105	0,40	32 x 70	0,22	32 x 140	0,54
25	40 x 115	0,61	40 x 46 x 115	0,68	36 x 80	0,30	41 x 160	1,08
26	45 x 120	0,91	47 x 53 x 120	1,13	36 x 80	0,26	41 x 170	1,08
28	45 x 125	0,85	47 x 53 x 125	1,09	40 x 85	0,34	41 x 180	1,02
30	50 x 135	1,19	47 x 53 x 135	1,10	45 x 90	0,46	50 x 180	1,71
32	52 x 140	1,32	57 x 64 x 140	1,92	45 x 90	0,46	50 x 180	1,71
36	60 x 150	1,92	57 x 64 x 150	1,78	50 x 120	0,73	60 x 180	2,75
40	65 x 160	2,34	65 x 72 x 160	2,52	54 x 120	0,82	65 x 210	3,58
43	80 x 170	4,49	75 x 82 x 170	3,79	60 x 130	1,19	70 x 220	4,46
50	80 x 200	4,49	-	-	63 x 160	1,09	80 x 240	6,12
57,5	102 x 230	9,51	-	-	80 x 170	2,92	-	-
63,5	102 x 260	9,41	-	-	90 x 200	4,16	-	-
75	108 x 240	8,01	-	-	102 x 210	5,33	-	-

## SAS SYSTEMS

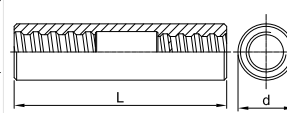
**Muffe standard mit Mittelstopp**  
*coupler standard with center stop*



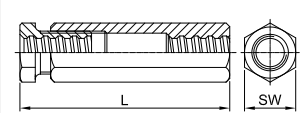
**Gewindemuffe mit Mittelstopp**  
*thread coupler with center stop*



**Reduziermuffe**  
*reducing coupler*



**Spannschloss**  
*tensioning lock*

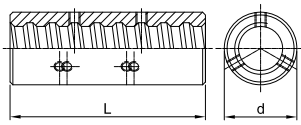


Ø [mm]	d x L [mm]	[kg]	d x d <sub>A</sub> x L [mm]	[kg]	Ø x d x L [mm]	[kg]	SW x ~L [mm]	[kg]
	T 3002		T 3086		T 3102		T 3105	
12	22 x 60	0,12	-	-	-	-	32 x 130	0,62
14	27 x 75	0,23	-	-	-	-	32 x 140	0,69
16	32 x 90	0,38	26,5 x 31 x 90	0,28	16/14 x 32 x 120	0,55	36 x 150	0,92
20	36 x 105	0,54	32 x 37 x 105	0,42	20/16 x 36 x 130	0,67	41 x 175	1,12
25	40 x 115	0,65	40 x 46 x 115	0,71	25/20 x 40 x 150	1,00	46 x 190	1,42
26	45 x 120	0,83	47 x 53 x 120	1,16	26/20 x 40 x 155	1,10	50 x 205	1,83
28	45 x 125	0,89	47 x 53 x 125	1,12	28/25 x 45 x 170	1,24	50 x 205	1,78
30	50 x 135	1,23	47 x 53 x 135	1,14	30/28 x 50 x 180	1,62	60 x 225	2,92
32	52 x 140	1,37	57 x 64 x 140	1,98	32/28 x 52 x 180	1,80	60 x 225	2,87
36	-	-	-	-	36/32 x 60 x 205	2,61	70 x 250	5,20
40	-	-	-	-	40/32 x 65 x 210	3,29	80 x 270	6,60
43	-	-	-	-	43/40 x 80 x 225	5,93	90 x 290	12,21
50	-	-	-	-	50/43 x 80 x 250	5,68	100 x 310	16,87
57,5	-	-	-	-	57,5/50 x 90 x 280	7,99	100 x 340	18,44
63,5	-	-	-	-	63,5/57,5 x 102 x 310	11,56	100 x 395	24,37
75	-	-	-	-	75/63,5 x 108 x 310	11,37	110 x 370	19,57

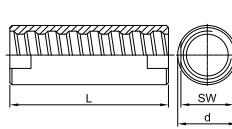


SAS SYSTEMS

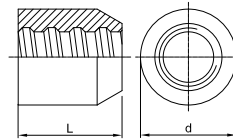
Muffe mit Drehsicherung  
coupler with set screws



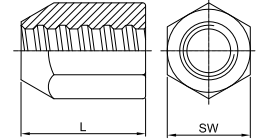
Muffe vergütet  
coupler tempered



Anschweißstück  
welding bolt



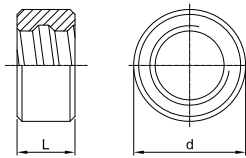
Anschweißstück SW  
welding bolt hexagonal



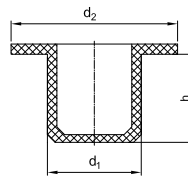
Ø [mm]	d x L [mm]	[kg]	SW x d x L [mm]	[kg]	d x L [mm]	[kg]	SW x L [mm]	[kg]
	T 3020		T 3927		T 3022		T 3026	
12	-	-	-	-	30 x 30	0,18	32 x 40	0,21
14	-	-	-	-	36 x 40	0,23	36 x 50	0,34
16	-	-	-	-	40 x 45	0,33	41 x 55	0,48
20	-	-	-	-	45 x 50	0,42	46 x 65	0,70
25	-	-	-	-	50 x 55	0,72	50 x 75	0,89
26	-	-	-	-	50 x 55	0,72	50 x 70	0,98
28	-	-	-	-	55 x 60	0,94	55 x 85	1,15
30	-	-	-	-	60 x 65	1,10	60 x 90	1,31
32	52 x 140	1,35	-	-	60 x 65	1,10	60 x 90	1,31
36	60 x 150	2,00	-	-	70 x 70	1,45	70 x 95	1,70
40	65 x 160	2,35	50 x 56 x 150	1,65	80 x 80	2,59	80 x 100	2,66
43	80 x 170	4,41	-	-	90 x 90	3,07	80 x 100	3,11
50	80 x 200	4,50	60 x 70 x 180	2,14	90 x 90	2,77	90 x 120	4,51
57,5	102 x 230	9,45	-	-	110 x 110	5,29	100 x 120	5,44
63,5	102 x 260	9,50	80 x 95 x 230	6,13	114 x 120	5,88	100 x 120	5,25
75	108 x 240	8,02	-	-	-	-	-	-

SAS SYSTEMS

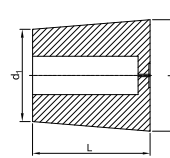
Haltering  
fix ring



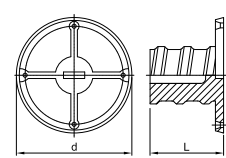
Verschlussstöpsel  
inner cap



Aussparungskegel  
recess cone



Nagelplatte  
nail plate

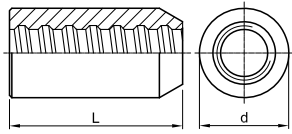


Ø [mm]	d x L [mm]	[kg]	d <sub>1</sub> x d <sub>2</sub> x h [mm]	[kg]	d <sub>1</sub> x d <sub>2</sub> x L [mm]	[kg]	d x L [mm]	[kg]
	T 5003		T 5025		T 5050		T 5979	
12	-	-	12 x 19 x 7	0,001	36 x 42 x 40	0,023	36 x 20	0,005
14	-	-	14 x 19 x 7	0,001	41 x 49 x 49	0,035	42 x 20	0,007
16	-	-	16 x 25 x 9	0,001	48 x 85 x 64	0,042	48 x 25	0,010
20	-	-	20 x 25 x 9	0,001	50 x 62 x 74	0,078	48 x 30	0,012
25	-	-	25 x 30 x 9	0,001	63 x 76 x 78	0,108	58 x 30	0,019
26	-	-	26 x 31 x 9	0,002	-	-	58 x 35	0,019
28	-	-	28 x 35 x 9	0,002	74 x 89 x 89	0,132	58 x 40	0,023
30	-	-	30 x 35 x 9	0,002	-	-	68 x 45	0,034
32	-	-	32 x 37 x 9	0,003	77 x 93 x 98	0,181	68 x 45	0,034
36	50 x 25	0,15	36 x 42 x 9	0,003	-	-	-	-
40	55 x 25	0,18	40 x 48 x 10	0,004	-	-	-	-
43	65 x 25	0,33	-	-	-	-	-	-
50	65 x 30	0,25	50 x 58 x 10	0,005	-	-	-	-
57,5	81 x 35	0,60	-	-	-	-	-	-
63,5	89 x 40	0,85	64 x 74 x 10	0,006	-	-	-	-
75	102 x 40	1,01	-	-	-	-	-	-

# Zubehör | accessories

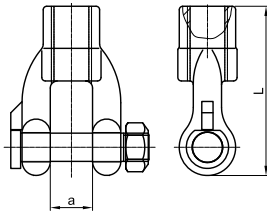
## SAS SYSTEMS

**Muffe angeschrägt**  
*coupler chamfered*



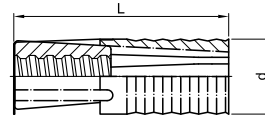
Ø [mm]      d x L [mm]      [kg]

**Gabelstück**  
*fork piece*



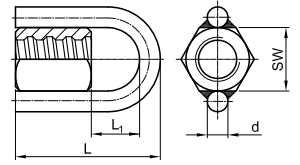
a x d x L [mm]      [kg]

**Spreizdübel**  
*expansion shell*



d x L [mm]      [kg]

**Ringmutter**  
*ring nut*

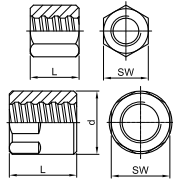


SW x L x L<sub>1</sub> x d [mm]      [kg]

	T 3901		T 2926		T 2136		T 2927	
12	-	-	-	-	-	-	-	-
14	-	-	-	-	-	-	-	-
16	-	-	-	-	32 x 92	0,22	32 x 110 x 54 x 16	0,57
20	36 x 105	0,42	30 x 20 x 120	1,17	39 x 110	0,45	36 x 120 x 59 x 16	0,67
25	40 x 115	0,50	30 x 20 x 120	1,10	49 x 120	0,63	41 x 130 x 64 x 16	0,77
26	-	-	-	-	-	-	-	-
28	45 x 125	0,74	-	-	49 x 120	0,57	46 x 145 x 74 x 16	0,97
30	-	-	-	-	-	-	-	-
32	52 x 140	1,22	-	-	59 x 150	1,02	55 x 165 x 89 x 16	1,34
36	-	-	-	-	-	-	-	-
40	-	-	-	-	-	-	65 x 194 x 103 x 20	2,10
43	-	-	-	-	-	-	-	-
50	-	-	-	-	-	-	79 x 234 x 122 x 20	3,29
57,5	-	-	-	-	-	-	90 x 256 x 136 x 20	5,06
63,5	-	-	-	-	-	-	100 x 280 x 144 x 20	6,07
75	-	-	-	-	-	-	-	-

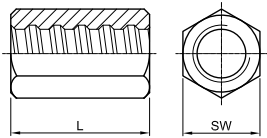
## SAS SYSTEMS

**Ankermutter EP gerade**  
*anchor nut EP flat*



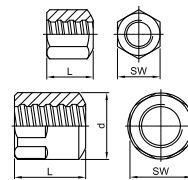
Ø [mm]      SW x L x d [mm]      [kg]

**Ankermutter EP lang**  
*anchor nut EP long*



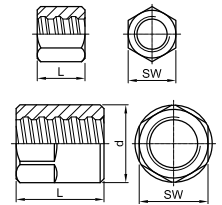
SW x L [mm]      [kg]

**Ankermutter EP ballig 30°**  
*bull nose nut EP 30°*



SW x L x d [mm]      [kg]

**Kontermutter EP lang**  
*lock nut EP long*

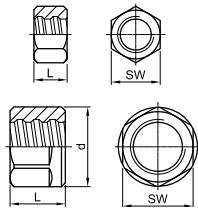


SW x L x d [mm]      [kg]

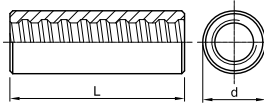
	T 2002 EP		T 2024 EP		T 2963 EP		T 2003 EP	
12	22 x 30	0,07	22 x 35	0,08	-	-	19 x 25	0,05
14	27 x 40	0,14	27 x 45	0,17	-	-	27 x 30	0,12
16	32 x 50	0,25	32 x 50	0,25	32 x 50	0,21	32 x 35	0,17
20	36 x 55	0,31	32 x 65	0,26	36 x 55	0,28	32 x 45	0,18
25	41 x 60	0,40	41 x 75	0,44	41 x 60	0,40	41 x 50	0,31
26	46 x 60	0,60	41 x 80	0,48	-	-	41 x 55	0,38
28	46 x 65	0,55	41 x 85	0,51	46 x 65	0,46	41 x 55	0,31
30	50 x 75	0,84	46 x 90	0,77	-	-	50 x 60	0,67
32	55 x 75	0,97	50 x 90	0,86	55 x 75	0,93	50 x 60	0,57
36	60 x 80	1,28	55 x 95	1,17	-	-	55 x 65	0,77
40	65 x 85	1,43	60 x 100	1,27	65 x 85	1,40	60 x 75	0,96
43	70 x 90	1,81	-	-	70 x 90	1,77	70 x 75	1,51
50	80 x 105	2,45	80 x 120	2,92	80 x 105	2,41	80 x 95	2,50
57,5	90 x 115 x 102	4,30	-	-	90 x 115 x 102	4,11	90 x 100 x 102	3,68
63,5	100 x 130 x 108	6,65	-	-	100 x 130 x 108	6,59	90 x 130 x 102	4,56
75	100 x 115 x 108	3,48	-	-	100 x 115 x 108	3,38	100 x 100 x 108	2,97



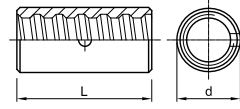
**Kontermutter EP kurz**  
*lock nut EP short*



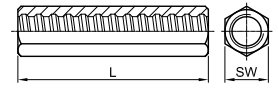
**Muffe EP standard**  
*coupler EP standard*



**Kontaktmuffe EP**  
*contact coupler EP*



**Sechskantmuffe EP lang**  
*hexagonal coupler EP long*



Ø [mm]	SW x L [mm]	[kg]	d x L [mm]	[kg]	d x L [mm]	[kg]	SW x L [mm]	[kg]
	T 2040 EP		T 3003 EP		T 3006 EP		T 3010 EP	
12	19 x 20	0,03	22 x 75	0,15	-	-	22 x 80	0,16
14	27 x 25	0,09	27 x 90	0,27	-	-	27 x 100	0,33
16	32 x 30	0,15	32 x 105	0,46	-	-	32 x 120	0,54
20	32 x 40	0,17	36 x 120	0,59	32 x 70	0,22	32 x 140	0,59
25	41 x 40	0,28	40 x 135	0,71	36 x 80	0,30	41 x 160	1,07
26	41 x 45	0,31	45 x 140	1,13	36 x 80	0,27	41 x 170	1,01
28	41 x 45	0,41	45 x 145	0,97	40 x 85	0,34	41 x 180	1,10
30	50 x 50	0,54	50 x 155	1,50	45 x 90	0,50	50 x 180	1,75
32	50 x 50	0,50	52 x 160	1,49	45 x 90	0,45	50 x 180	1,71
36	55 x 55	0,64	60 x 170	2,30	50 x 120	0,72	60 x 190	2,75
40	60 x 65	0,85	65 x 190	3,07	54 x 120	0,82	65 x 210	2,71
43	70 x 65	-	80 x 200	5,28	60 x 130	1,18	-	-
50	80 x 80	2,10	80 x 235	5,50	65 x 160	1,11	80 x 240	5,88
57,5	90 x 80 x 102	2,85	102 x 260	10,73	80 x 170	2,90	-	-
63,5	90 x 115 x 102	3,75	102 x 300	10,74	90 x 200	4,14	-	-
75	100 x 80 x 108	2,36	108 x 270	9,00	102 x 210	5,30	-	-

Zulassungen | approvals



Unsere aktuellen Zulassungen können Sie jederzeit direkt aus dem Downloadbereich unserer Homepage herunterladen.






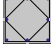






[www.annahuette.com](http://www.annahuette.com)

Darüber hinaus verfügen auch unsere Partner-Unternehmen in weiteren Ländern über zusätzliche Zulassungen und Zertifikate für die verschiedensten Anwendungen.

*Current approvals and certificates can be downloaded from our homepage.*

[www.annahuette.com](http://www.annahuette.com)

*Furthermore, the partner-companies of SAH own further approvals and certificates in several countries for different applications as well.*

Streckgrenze / Zugfestigkeit yield stress / ultimate stress		Nenn- $\varnothing$ nom.- $\varnothing$	Strecklast yield load	Bruchlast ultimate load	Fläche cross section area	Gewicht weight	Dehnung elongation				
Anwendungsbereiche / areas of application		[mm]	[kN]	[kN]	[mm <sup>2</sup> ]	[m/to]	[kg/m]	A <sub>gt</sub> [%]	A <sub>10</sub> [%]		
<b>SAS 500 / 550 - grade 75</b>											
 Bewehrungstechnik / reinforcing systems		12	57	62	113	1123,6	0,89	6	10		
		14	77	85	154	826,4	1,21				
		16	100	110	201	632,9	1,58				
		20	160	175	314	404,9	2,47				
		25	245	270	491	259,7	3,85				
		28	310	340	616	207,0	4,83				
 Geotechnik / geotechnical systems		32	405	440	804	158,5	6,31				
		36	510	560	1020	125,2	7,99				
		40	630	690	1260	101,3	9,87				
		43	726	799	1452	87,7	11,40				
		50	980	1080	1960	64,9	15,40				
<b>SAS 555 / 700 - grade 80</b>		57,5	1441	1818	2597	49,1	20,38	5	10		
<b>SAS 555 / 700 - grade 80</b>		63,5	1760	2215	3167	40,2	24,86	5	---		
SAS 500 / 550 - grade 75		75	2209	2430	4418	28,8	34,68	5	---		
<i>Alternativ SAS 550 erhältlich / alternative SAS 550 grade 75 available</i>											
<b>SAS 450 / 700 - grade 60</b>											
 Bergbau / mining		16	93	145	207	617,3	1,62		(A <sub>5</sub> ) 15		
		25	220	345	491	259,7	3,85		(A <sub>5</sub> ) 20		
<b>SAS 650 / 800 - grade 90</b>											
 Bergbau / mining		22	247	304	380	335,6	2,98		(A <sub>5</sub> ) 18		
		25	319	393	491	259,7	3,85				
		28	400	493	616	207,0	4,83				
		30	460	565	707	180,2	5,55				
<b>SAS 670 / 800 - grade 97</b>											
 Geotechnik / geotechnical systems		18	170	204	254	500,0	2,00	5	10		
		22	255	304	380	335,6	2,98				
		25	329	393	491	259,7	3,85				
		28	413	493	616	207,0	4,83				
 Ankertechnik / tunneling & mining		30	474	565	707	180,2	5,55				
		35	645	770	962	132,5	7,55				
		43	973	1162	1452	87,7	11,40				
		50	1315	1570	1963	64,9	15,40				
 Hochfeste Bewehrung / high-strength reinforcement		57,5	1740	2077	2597	49,1	20,38				---
		63,5	2122	2534	3167	40,2	24,86				---
		75	2960	3535	4418	28,8	34,68		---		
<b>SAS 950 / 1050 - grade 150</b>											
 Spanntechnik / post-tensioning systems		18	230	255	241	510,2	1,96	5	7		
		26,5	525	580	551	223,2	4,48				
		32	760	845	804	153,1	6,53				
		36	960	1070	1020	120,9	8,27				
 Geotechnik / geotechnical systems		40	1190	1320	1257	97,9	10,21				
		47	1650	1820	1735	70,9	14,10				
<b>SAS 835 / 1035 - grade 150</b>											
 Geotechnik / geotechnical systems		57	2155	2671	2581	47,7	20,95	4	---		
		65	2780	3447	3331	36,9	27,10		---		
		75	3690	4572	4418	27,9	35,90		---		
<b>SAS 900 / 1100 FA - grade 160 FA</b> <span style="float: right;">schweißbar / weldable</span>											
 Schalungstechnik / formwork ties		15	159	195	177	694,4	1,44	3	7		
		20	283	345	314	390,6	2,56				
		26,5	495	606	551	223,2	4,48			2	
<b>SAS 900 / 1050 FC - grade 150 FC</b>											
 Schalungstechnik / formwork ties		15	159	186	177	694,4	1,44	3	7		
		20	283	330	314	390,6	2,56				
<b>SAS 950 / 1050 E - grade 150</b>		26,5	525	580	551	223,2	4,48	5	7		
<b>SAS 750 / 875 FS - kaltgerollt / cold rolled - grade 120 FS</b> <span style="float: right;">schweißbar / weldable</span>											
 Schalungstechnik / formwork ties		12,5	90	120	132,5	961,5	1,04	2	5,5		
		15	142	165	189	675,7	1,48				
		20	245	285	326	390,6	2,56				

Zubehör für alle Abmessungen und Anwendungen lieferbar / accessories for all dimensions and applications available

Stahlwerk Annahütte  
 Max Aicher GmbH & Co. KG  
 Max Aicher Allee 1+2 • 83404 Hammerau • Deutschland  
 Tel. +49 (0) 8654 487 0 • Fax +49 (0) 8654 487 968  
 stahlwerk@annahuette.com • www.annahuette.com